



JOIN THE LEGACY OF
THURSTON HALL

Dining Hall (1 available)	\$1,000,000
Courtyard (1 available)	\$500,000
Rooftop Commons (1 available)	\$350,000
Lobby (1 available)	\$300,000
Residential Life Administrative Suite (1 available)	\$250,000
Double-level Community Lounges (3 available)	\$225,000
Courtyard Terraces (1/2 available)	\$125,000
RESERVED	
Faculty/Staff Residences (4 available)	\$100,000
Large Community Lounges (1/2 available)	\$100,000
RESERVED	
Community Lounges (3/4 available)	\$75,000
RESERVED	
Corner Study Lounges (6/8 available)	\$50,000
RESERVED	
Connection Bridge (0/1 available)	\$40,000
RESERVED	
Student Rooms (457/458 available)	\$30,000
RESERVED	
Study Rooms (4/8 available)	\$25,000
RESERVED	
Bike Storage Room (1 available)	\$20,000
Package Room (0/1 available)	\$20,000
RESERVED	
Study Nooks (17/22 available)	\$10,000
RESERVED	

Gifts may be paid over 1 to 5 years. For more information, contact Sarah (Lefferts) Fosdick, GWSB BBA '09, CCAS MA '16, at 202-994-0665 or supportstudents@gwu.edu.

To see renderings of these spaces, take a virtual tour at go.gwu.edu/ThurstonLegacy.

NAMING OPPORTUNITIES SPACE DESCRIPTIONS

To see renderings of these spaces, take a virtual tour at go.gwu.edu/ThurstonLegacy.

DINING HALL

■ Floor: Lower Level

The dining hall on the lower level of Thurston Hall will create a first-rate on-campus dining experience for students and bring them together around food in a way that is critical to social connectivity for this new generation of students. Providing students with healthy and affordable meals every day is fundamental to fostering a safe and caring environment. The dining hall will be a place of connection, where students from diverse cultures and backgrounds can come together to break bread. Many Thurston alumni cherish memories of sharing countless meals with friends in the dining hall that previously existed in Thurston Hall. However, for the past few decades, GW students have preferred the flexibility of grab-and-go options for food. While the university will continue to offer these selections, it is time we also provide students an exclusively GW space to gather with their friends over a meal.

COURTYARD

■ Floor: 1

The courtyard is the central feature of the reimagined Thurston Hall. The courtyard will be covered by an innovative transparent roof to ensure that the space can be used in any season despite the weather. This transparent roof will also allow natural light to stream in, creating a bright space for students to gather. The structure of the reimagined Thurston Hall has been carefully designed to ensure that the appropriate amount of light will enter the interior glass spaces throughout the day and year. The courtyard is divided into two areas, the lower and upper courtyard. Both will feature diverse seating options so that students can use the space for whatever needs they have, whether that be studying, eating, or meeting with friends. The courtyard also features an array of greenery in plant boxes to complete the outdoor feel. While most of GW's campus is public to the rest of D.C., this area can only be accessed by those in the GW community, giving students an "outdoor" space that they can truly own unlike any other on campus.

ROOFTOP COMMONS

■ Floor: Rooftop Level

The rooftop commons is located on the new rooftop level of the reimagined Thurston Hall. This entire level is an addition to the original building's structure. The rooftop commons features floor-to-ceiling glass windows on the north side of the building, providing students with a panoramic view of D.C. The area is versatile, and it will function as both a spacious lounge for students and a venue for formal and informal events. The rooftop commons also features a view of the entire central courtyard. Taking up the majority of the floor, the rooftop commons is the only naming opportunity on the rooftop level of the legendary Thurston Hall.

LOBBY

■ Floor: 1

The lobby is where the reimagined Thurston experience will begin for all students, family members, and visitors who enter the new building. While the original facade of the legendary Thurston Hall preserves the building's history and memories, the lobby will showcase the dramatic transformations to the space that will foster a preeminent student experience for first year students, continuing the Thurston legacy in a healthy new environment. The lobby features a front desk, an elevator bay, a staircase to the dining hall, and seating where students can gather to study, meet friends, or relax. The floor to ceiling glass walls between the lobby and the courtyard allow natural light to fill the lobby, making it a bright and welcoming space.

RESIDENTIAL LIFE ADMINISTRATIVE SUITE

■ Floor: 1

The residential life administrative suite is a space where university staff members who are residential life professionals will work to continually ensure GW students have the best possible experience while living on campus. By placing this administrative suite on the first floor, GW is ensuring that the residential life professionals are accessible to the students that they serve. This suite will contain a welcome area, multiple offices, and meeting rooms.

DOUBLE-LEVEL COMMUNITY LOUNGES

■ Floors: 3 & 4; 5 & 6; 7 & 8

The double-level community lounges are large areas for students to work independently or in groups. Each double-level lounge features a kitchen where students can cook and share meals. The double-level feature opens up the ceiling in parts of the lounge to create the feeling of a bigger space. The lofted lounge space provides additional seating where students can study, play games with friends, or simply hang out. These lounges are large enough that multiple groups can be working in the same space without it feeling crowded.

COURTYARD TERRACES

■ Floors: 5, 7

The courtyard terraces are bright, open-air community spaces within Thurston Hall that overlook the entire courtyard. The ample seating provides students with a place to study and gather with friends. The courtyard terraces provide students with additional "outdoor" spaces that can be enjoyed in any weather.

FACULTY/STAFF RESIDENCES

■ Floors: 3, 5, 7, 9

The faculty/staff residences are apartments where our faculty and professional staff can live on the same floors as students, but still maintain a private living space. By incorporating these apartments within Thurston Hall, GW students will have the opportunity to interact with their professors outside of the classroom to continue learning from faculty mentorship. Professional staff will be able to effectively provide support to students during their first year experience through shared community. The faculty/staff residences are located in close proximity to the double-level community lounges in order to facilitate group programming within Thurston for student residents.

LARGE COMMUNITY LOUNGES

■ Floors: 2, 9

The large community lounges are spacious areas for students to come together to study, hang out, and collaborate. With only two of these lounges in the entire building, each one has a special feature. The second floor large community lounge partially opens up to the lobby on the first floor, so that students can see the comings and goings throughout the day. The ninth floor large community lounge features a kitchen so that students can cook and eat together.

COMMUNITY LOUNGES

■ Floors: 1-4

The community lounges are collaborative spaces for students to come together in a wide range of capacities. With a variety of seating available, this space can be used for both academic and social purposes. The floor-to-ceiling windows let in ample natural light and give students a full view of the inner courtyard.

CORNER STUDY LOUNGES

■ Floors: 2-9

Located at the intersection of two hallways, these corner study lounges provide students with a space to interact and study with others on their floor. The corner study lounges are the only study lounges that feature outward-facing windows, so students studying here will enjoy a beautiful view of D.C.

CONNECTION BRIDGE

■ Floor: 8

As Thurston Hall's tiered design creates more open-aired spaces within the higher levels, the connection bridge on the eighth floor joins the eastern and western halves of the building. This glass bridge is suspended over the seventh floor courtyard terrace and is a prominent feature of the interior architecture of the building. As the only one of its kind in a residence hall, the connection bridge is a unique addition to the reimagined Thurston Hall.

STUDENT ROOMS

■ Floors: 1-9

Thurston Hall will feature both single and double student rooms in the traditional residence hall style. These rooms will be students' home away from home while they are at GW—a place where they can comfortably sleep and study. Each room has additional "porch" space outside of it to encourage informal interactions among residents on a daily basis.

STUDY ROOMS

■ Floors: 2-9

The study rooms are areas dedicated to collaborative learning that feature floor-to-ceiling windows overlooking the central courtyard. When viewing these study rooms from the courtyard, their standout architectural features give dimension to the facade of the inner building and immediately call them to attention. Each study room provides students with a shared space in which they can gather to work on group projects, do homework together, or socialize.

BIKE STORAGE ROOM

■ Floor: Lower Level

The bike storage room provides students with a place to conveniently and securely store their bikes. This space within Thurston Hall is critical to encouraging personal health as well as environmentally friendly transportation for residents.

PACKAGE ROOM

■ Floor: Lower Level

The package room is a space designed for students to securely pick up any packages delivered to them, whether that be a new textbook or a care package from family members. For the convenience of Thurston residents, their packages will be available for pick up in their own residence hall.

STUDY NOOKS

■ Floors: 1-9

Located at the intersection of hallways, the study nooks provide students with a comfortable area to study individually. Each study nook mixes both an individual studying experience with some social interaction as friends and neighbors pass by. The window in every study nook also provides the added benefit of being able to study in natural light while looking out at D.C.

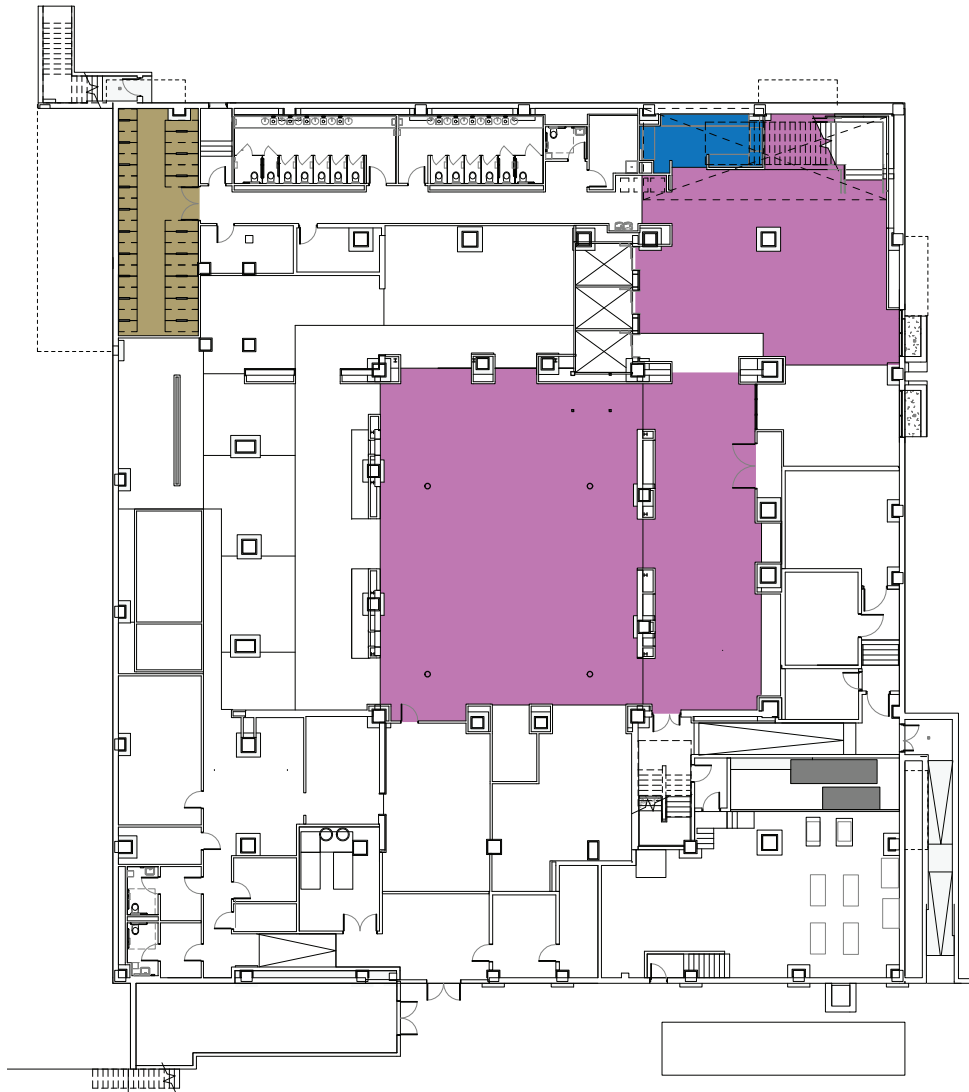
THURSTON HALL

Naming Opportunities

LOWER LEVEL

- Dining Hall (1 available) \$1,000,000
- Bike Storage Room (1 available) \$20,000
- Package Room (0/1 available) \$20,000

RESERVED



Gifts may be paid over 1 to 5 years.







For more information, contact Sarah (Lefferts) Fosdick, GWSB BBA '09, CCAS MA '16, at 202-994-0665 or supportstudents@gwu.edu.

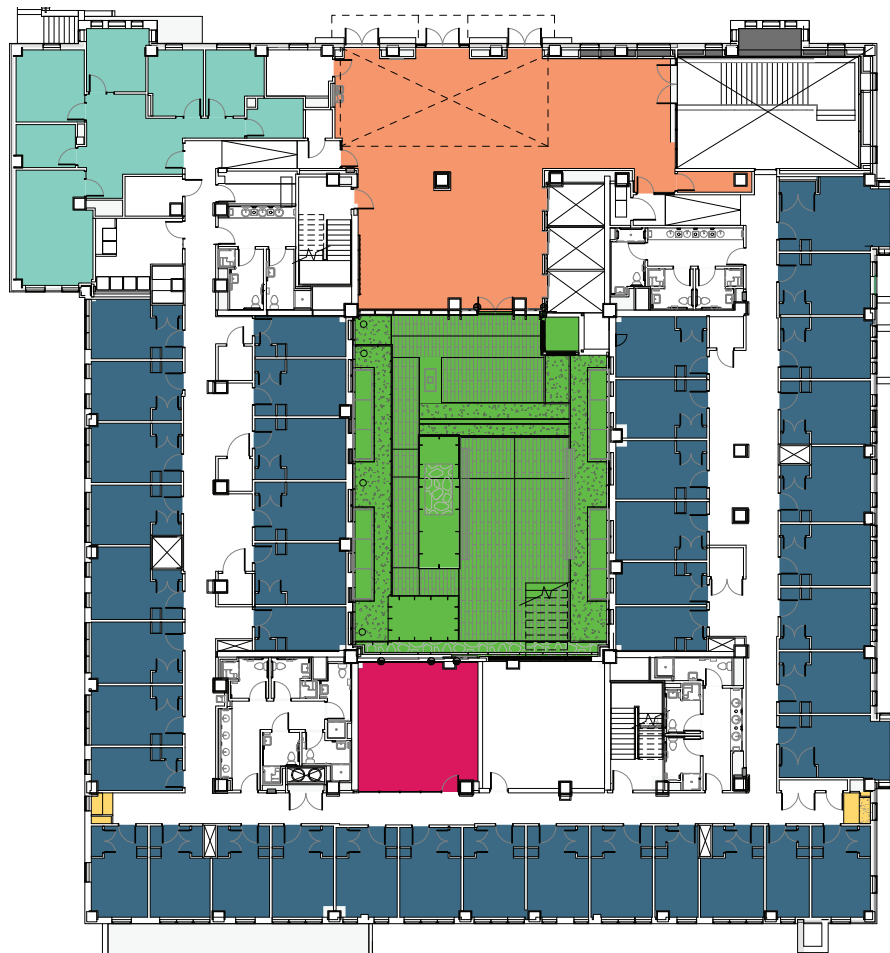
To see renderings of these spaces, take a virtual tour at go.gwu.edu/ThurstonLegacy.

THURSTON HALL

Naming Opportunities

FIRST FLOOR

 Courtyard (1 available)	\$500,000
 Lobby (1 available)	\$300,000
 Residential Life Administrative Suite (1 available)	\$250,000
 Community Lounge (1 available)	\$75,000
 Student Rooms (42 available)	\$30,000
 Study Nooks (2 available)	\$10,000



Gifts may be paid over 1 to 5 years.

For more information, contact Sarah (Lefferts) Fosdick, GWSB BBA '09, CCAS MA '16, at 202-994-0665 or supportstudents@gwu.edu.

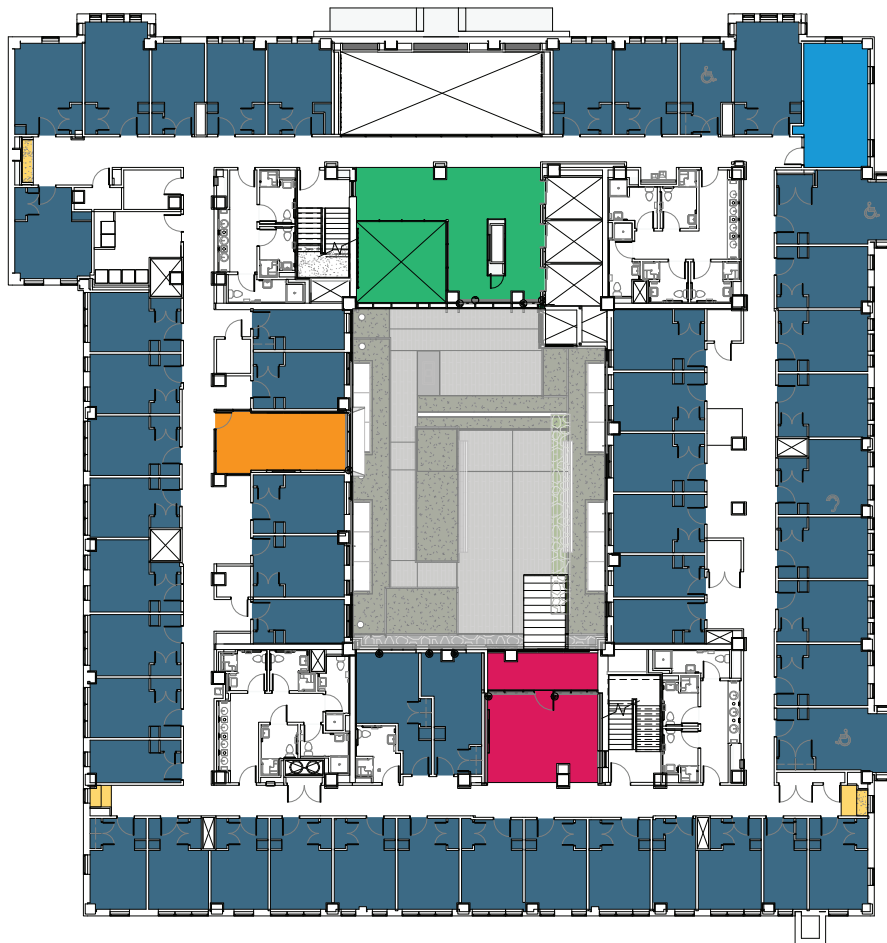
To see renderings of these spaces, take a virtual tour at go.gwu.edu/ThurstonLegacy.

THURSTON HALL

Naming Opportunities

SECOND FLOOR

■ Large Community Lounge (1 available)	\$100,000
■ Community Lounge (0/1 available)	\$75,000
RESERVED	
■ Corner Study Lounge (1 available)	\$50,000
■ Student Rooms (53 available)	\$30,000
■ Study Room (0/1 available)	\$25,000
RESERVED	
■ Study Nooks (3 available)	\$10,000



Gifts may be paid over 1 to 5 years.








For more information, contact Sarah (Lefferts) Fosdick, GWSB BBA '09, CCAS MA '16, at 202-994-0665 or supportstudents@gwu.edu.

To see renderings of these spaces, take a virtual tour at go.gwu.edu/ThurstonLegacy.

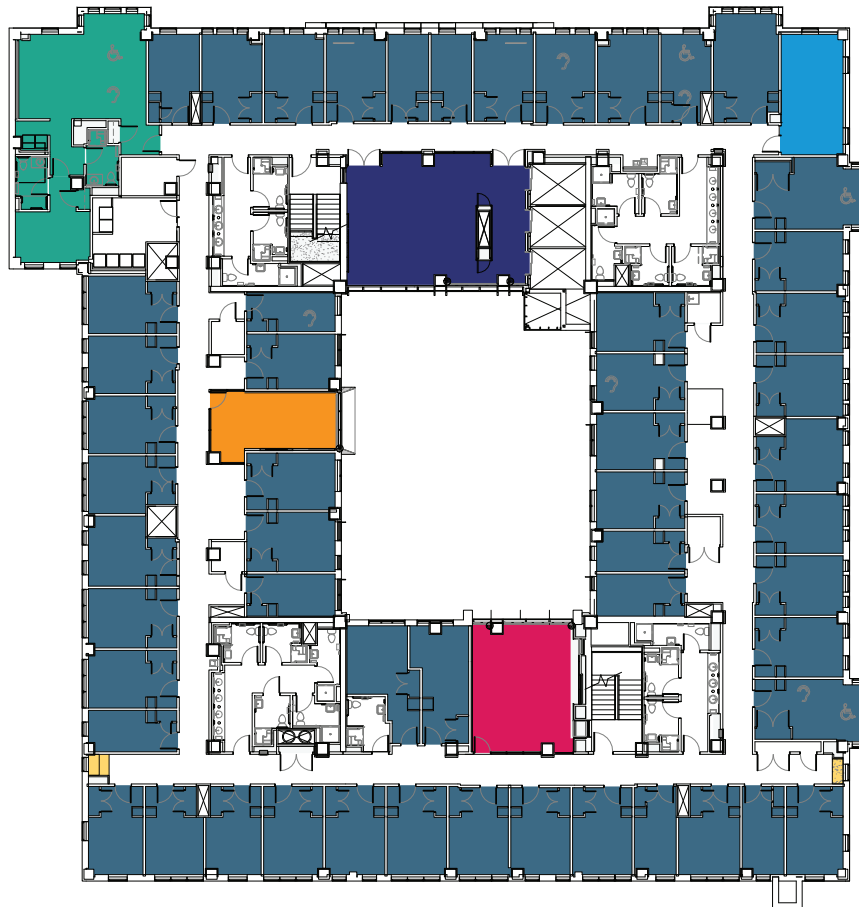
THURSTON HALL

Naming Opportunities

THIRD FLOOR

	Double-Level Community Lounge (1 available)	\$225,000
	Faculty/Staff Residence (1 available)	\$100,000
	Community Lounge (1 available)	\$75,000
	Corner Study Lounge (1 available)	\$50,000
	Student Rooms (54 available)	\$30,000
	Study Room (1 available)	\$25,000
	Study Nooks (1/2 available)	\$10,000

RESERVED



Gifts may be paid over 1 to 5 years.

For more information, contact Sarah (Lefferts) Fosdick, GWSB BBA '09, CCAS MA '16, at 202-994-0665 or supportstudents@gwu.edu.

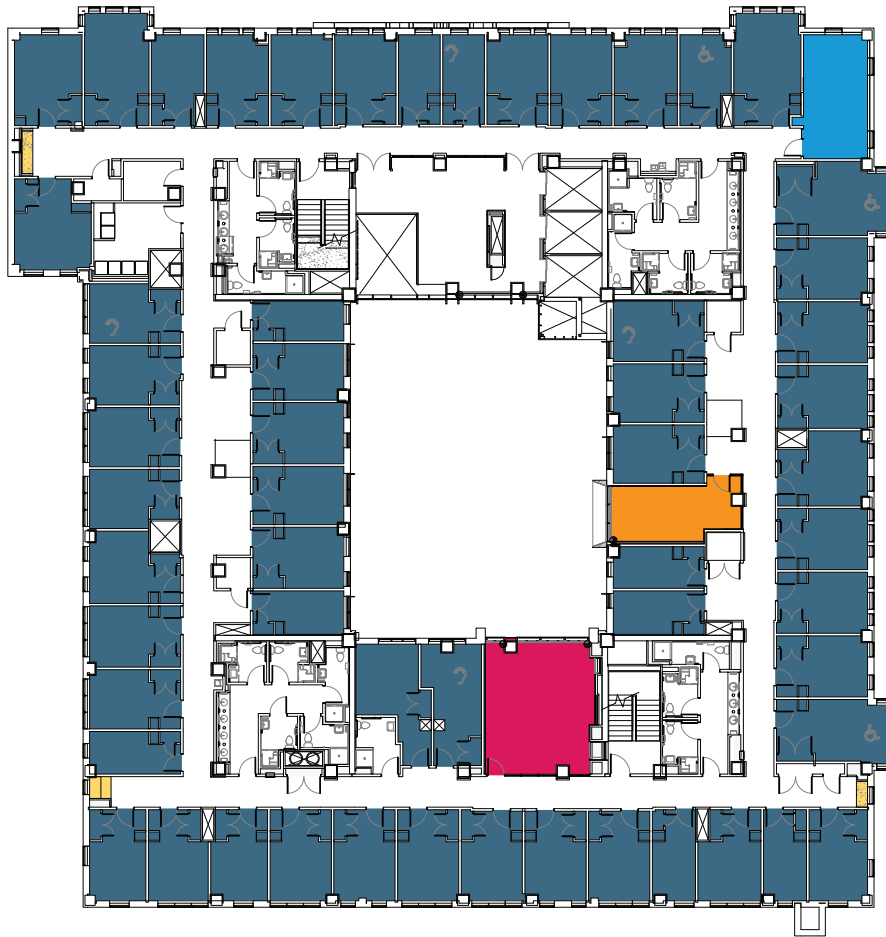
To see renderings of these spaces, take a virtual tour at go.gwu.edu/ThurstonLegacy.

THURSTON HALL

Naming Opportunities

FOURTH FLOOR

	Community Lounge (1 available)	\$75,000
	Corner Study Lounge (1 available)	\$50,000
	Student Rooms (57/57 available)	\$30,000
	Study Room (1 available)	\$25,000
	Study Nooks (3 available)	\$10,000



Gifts may be paid over 1 to 5 years.

For more information, contact Sarah (Lefferts) Fosdick, GWSB BBA '09, CCAS MA '16, at 202-994-0665 or supportstudents@gwu.edu.

To see renderings of these spaces, take a virtual tour at go.gwu.edu/ThurstonLegacy.

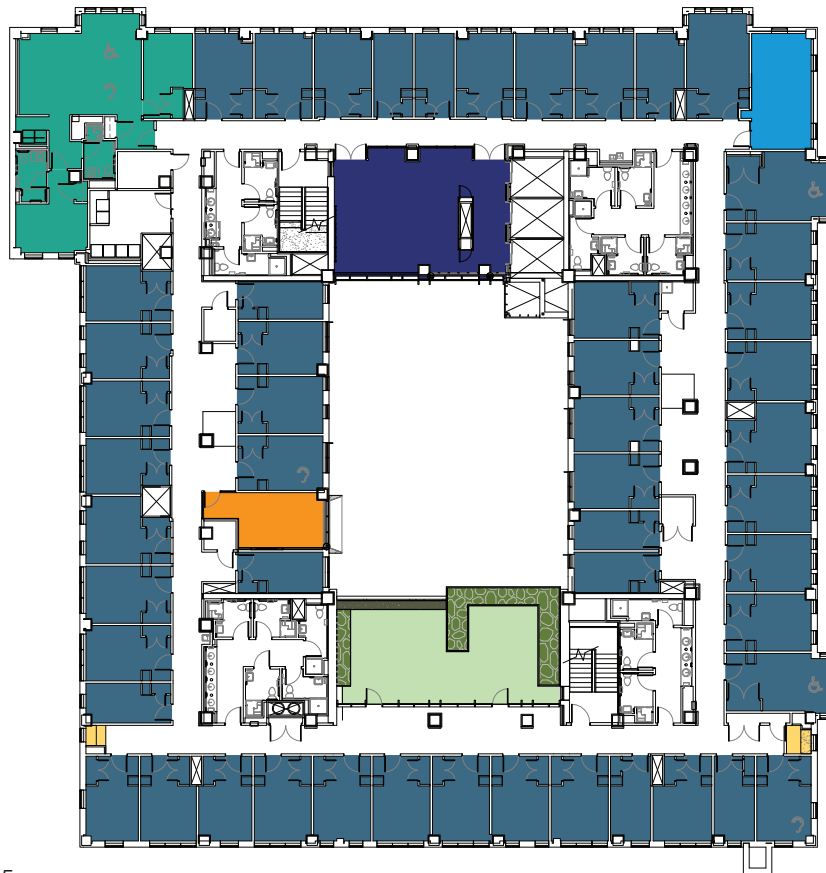
THURSTON HALL

Naming Opportunities

FIFTH FLOOR

■ Double-Level Community Lounge (1 available)	\$225,000
■ Courtyard Terrace (1 available)	\$125,000
■ Faculty/Staff Residence (1 available)	\$100,000
■ Corner Study Lounge (1 available)	\$50,000
■ Student Rooms (51/51 available)	\$30,000
■ Study Room (1 available)	\$25,000
■ Study Nooks (1/2 available)	\$10,000

RESERVED



Gifts may be paid over 1 to 5 years.

For more information, contact Sarah (Lefferts) Fosdick, GWSB BBA '09, CCAS MA '16, at 202-994-0665 or supportstudents@gwu.edu.

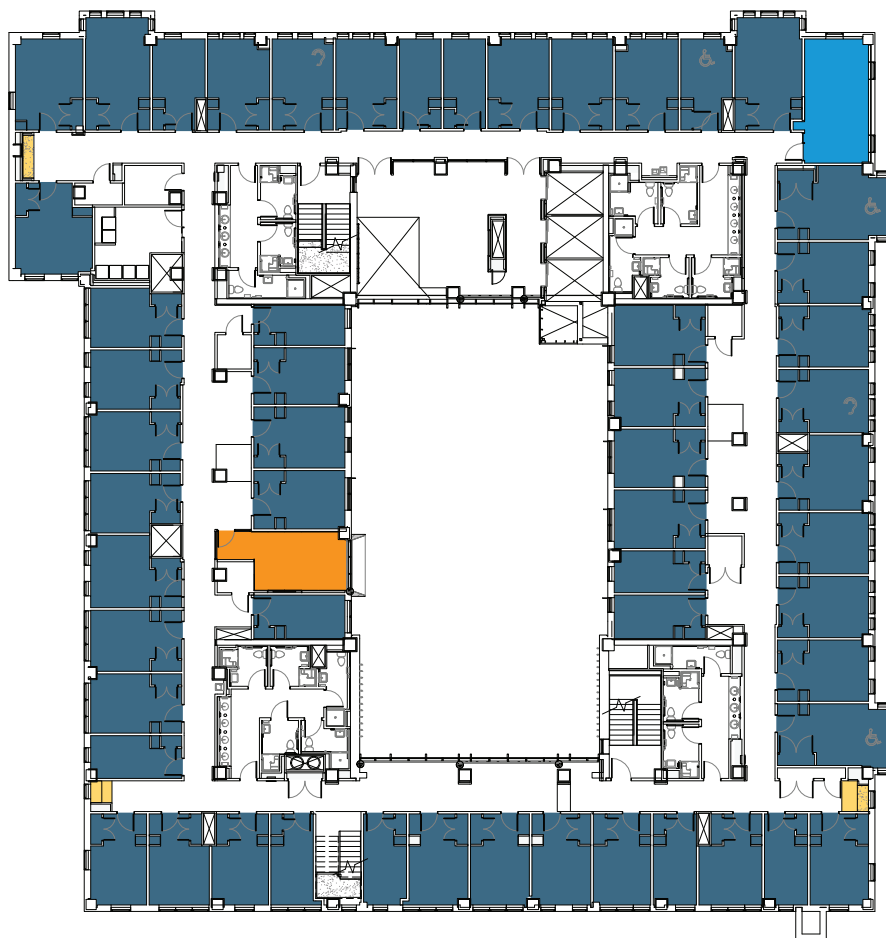
To see renderings of these spaces, take a virtual tour at go.gwu.edu/ThurstonLegacy.

THURSTON HALL

Naming Opportunities

SIXTH FLOOR

 Corner Study Lounge (1 available)	\$50,000
 Student Rooms (55 available)	\$30,000
 Study Room (1 available)	\$25,000
 Study Nooks (3 available)	\$10,000



Gifts may be paid over 1 to 5 years.










For more information, contact Sarah (Lefferts) Fosdick, GWSB BBA '09, CCAS MA '16, at 202-994-0665 or supportstudents@gwu.edu.

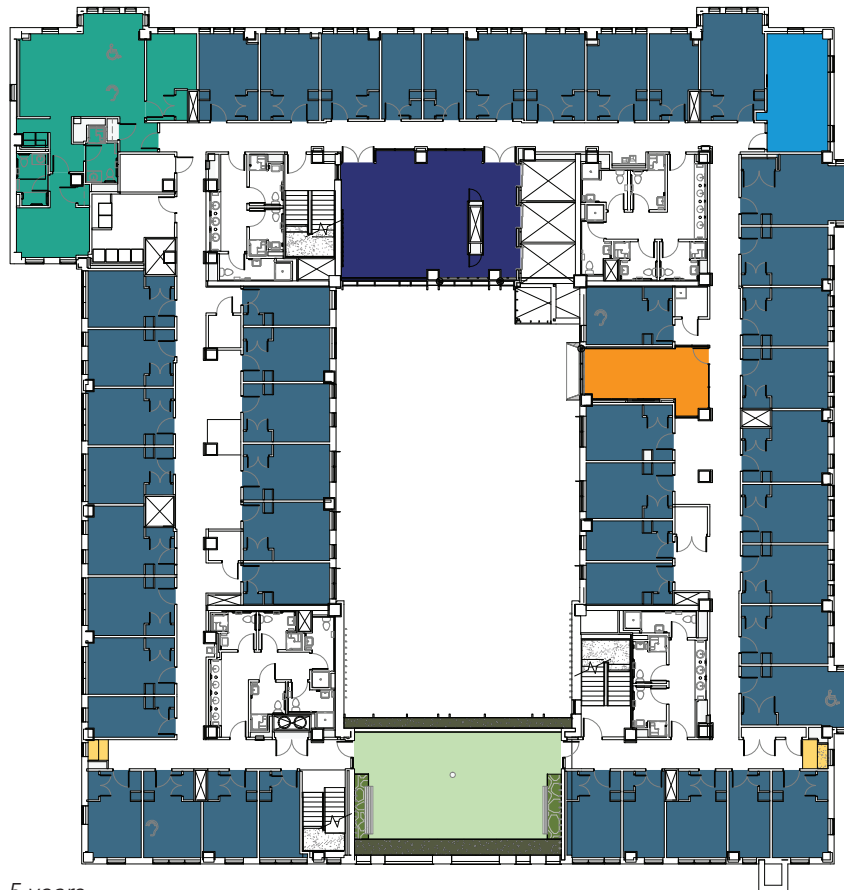
To see renderings of these spaces, take a virtual tour at go.gwu.edu/ThurstonLegacy.

THURSTON HALL

Naming Opportunities

SEVENTH FLOOR

	Double-Level Community Lounge (1 available)	\$225,000
	Courtyard Terrace (0/1 available)	\$125,000
	RESERVED	
	Faculty/Staff Residence (1 available)	\$100,000
	Corner Study Lounge (1 available)	\$50,000
	Student Rooms (47 available)	\$30,000
	Study Room (0/1 available)	\$25,000
	RESERVED	
	Study Nooks (2 available)	\$10,000



Gifts may be paid over 1 to 5 years.

For more information, contact Sarah (Lefferts) Fosdick, GWSB BBA '09, CCAS MA '16, at 202-994-0665 or supportstudents@gwu.edu.

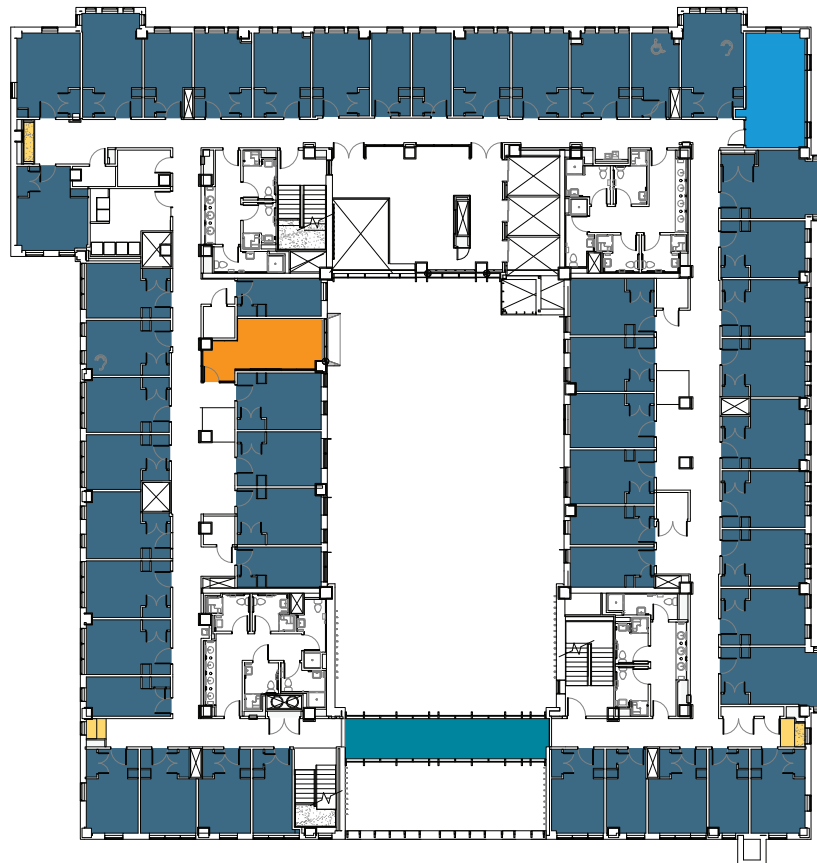
To see renderings of these spaces, take a virtual tour at go.gwu.edu/ThurstonLegacy.

THURSTON HALL

Naming Opportunities

EIGHTH FLOOR

■ Corner Study Lounge (0/1 available)	\$50,000
RESERVED	
■ Connection Bridge (0/1 available)	\$40,000
RESERVED	
■ Student Rooms (51 available)	\$30,000
■ Study Room (0/1 available)	\$25,000
RESERVED	
■ Study Nooks (2/3 available)	\$10,000
RESERVED	



Gifts may be paid over 1 to 5 years.

For more information, contact Sarah (Lefferts) Fosdick, GWSB BBA '09, CCAS MA '16, at 202-994-0665 or supportstudents@gwu.edu.

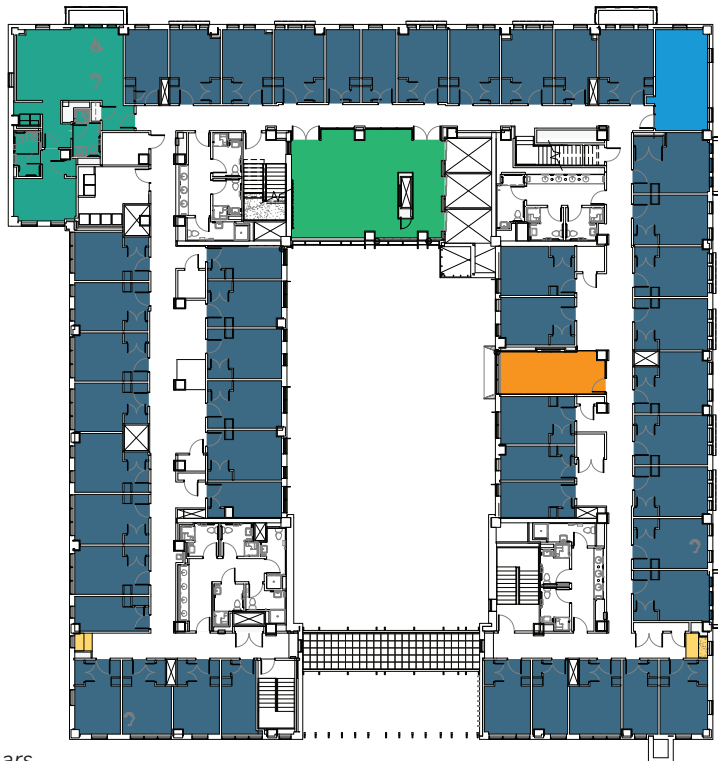
To see renderings of these spaces, take a virtual tour at go.gwu.edu/ThurstonLegacy.

THURSTON HALL

Naming Opportunities

NINTH FLOOR

■ Faculty/Staff Residence (1 available)	\$100,000
■ Large Community Lounge (0/1 available)	\$100,000
RESERVED	
■ Corner Study Lounge (0/1 available)	\$50,000
RESERVED	
■ Student Rooms (47/48 available)	\$30,000
RESERVED	
■ Study Room (0/1 available)	\$25,000
RESERVED	
■ Study Nooks (0/2 available)	\$10,000
RESERVED	



Gifts may be paid over 1 to 5 years.

For more information, contact Sarah (Lefferts) Fosdick, GWSB BBA '09, CCAS MA '16, at 202-994-0665 or supportstudents@gwu.edu.

To see renderings of these spaces, take a virtual tour at go.gwu.edu/ThurstonLegacy.

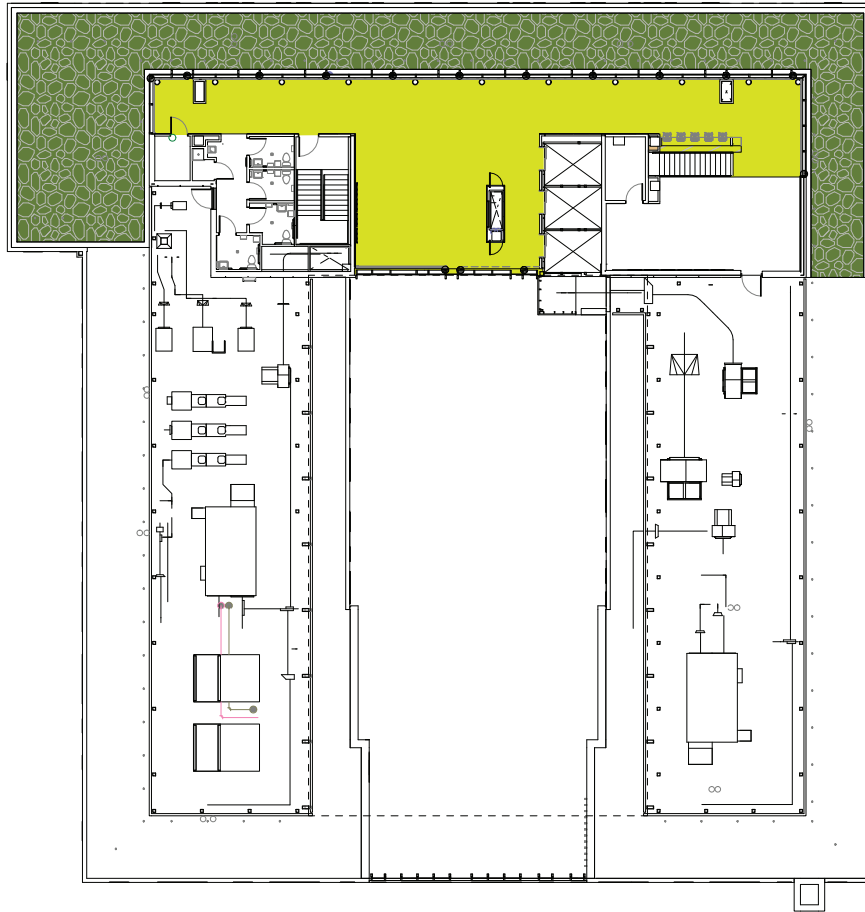
THURSTON HALL

Naming Opportunities

ROOFTOP LEVEL

■ Rooftop Commons (1 available)

\$350,000



Gifts may be paid over 1 to 5 years.

For more information, contact Sarah (Lefferts) Fosdick, GWSB BBA '09, CCAS MA '16, at 202-994-0665 or supportstudents@gwu.edu.

To see renderings of these spaces, take a virtual tour at go.gwu.edu/ThurstonLegacy.

THE GEORGE WASHINGTON UNIVERSITY

WASHINGTON, DC